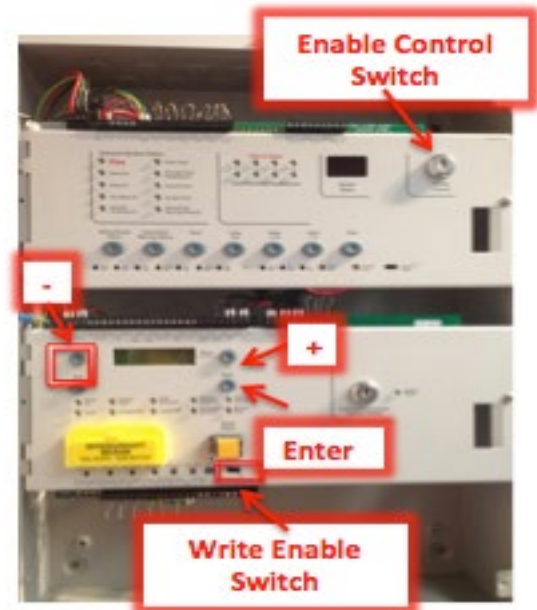


Sigma-XT
Step by Step
Set Up

Switch the “ENABLE CONTROL “003 KEYSWITCH “to the “Horizontal” position.

Gently switch the “WRITE ENABLE” switch on the below extinguishing module to the “LEFT”

*** To save the program move the “WRITE ENABLE” switch back to the “RIGHT” at any time during the following process***

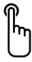
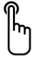
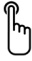
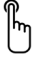


ALL OF THE FOLLOWING PROCESSES ARE CONDUCTED VIA THE EXTINGUISHING MODULES DISPLAY AND BUTTONS.

The “+” or “-“buttons are used to scroll backward & forth.

If warning signs & local control stations are connected via the RS485 comms (via the Status Serial +/- terminals) on the Gas control card, the panel will request that you acknowledge these individually by pushing the “ENTER” button to accept each one.

Press "ENTER" to access the menu

Screen Display	Instructions	
LANGUAGE MODE		
LOCAL	This is default and does not need to be changed	
EXT O/P MODE		
COMMON MAIN / RESERVE	Common is the default	To change – press "Enter" when it has the option you want press "Enter" again to confirm
 Press "+"		
ACTIVATION MODE		
COINCIDENCE SINGLE	Coincidence is the default	To change – press "Enter" when it has the option you want press "Enter" again to confirm
 Press "+"		
USER O/P MODE		
STAGE 1 HOLD	Stage 1 is the default	To change – press "Enter" when it has the option you want press "Enter" again to confirm
 Press "+"		
FIRST ACTIVATION ZONE		
ZONE 1	Zone 1 is the default	To Change – press "Enter" then "+" or "-" to scroll to the appropriate zone then press "Enter" to accept the changes
 Press "+"		

Screen Display**Instructions****LAST ACTIVATION MODE****ZONE 2**

Zone 2 is default

To Change – press “Enter” then “+” or “-” to scroll to the appropriate zone then press “Enter” to accept the change

Note if “Coincidence has been selected in previous menu, any two (2) zones in the range will initiate the extinguishing system

Note if “Single” has been selected in previous menu any one (1) of zones in the range will initiate the extinguishing system

**Press “+”****RESET INHIBIT TIME**

0 is the default

0

To change – press “Enter” when it has the option you want press “Enter” again to confirm

**Press “+”****PRE RELEASE DELAY TIME**

30 seconds is the default

30 sec

To change – press “Enter” when it has the option you want press “Enter” again to confirm

**Press “+”****EXTINGUISHANT TIME RELEASE**

60 seconds is the default

60 sec

To change – press “Enter” when it has the option you want press “Enter” again to confirm

**Press “+”**

Screen Display**Instructions**

SECOND STAGE ALARM PULSING / CONTINUOUS PULSED

Pulsed is the default

To change – press “Enter” when it has the option you want press “Enter” again to confirm

Note: Setting the option for STEADY ACTIV. ALARMS is not compliant with AS7240



Press “+”

RELEASED INDICATION

Released Input is the default

To change – press “Enter” when it has the option you want press “Enter” again to confirm

RELEASED INPUT EXTING REL

Press “+”

DELAY ON MANUAL RELEASE

Delay on is the default

To change – press “Enter” when it has the option you want press “Enter” again to confirm

DELAY ON NO DELAY ON

Press “+”

RELEASE TIMER

Enabled is the default

To change – press “Enter” when it has the option you want press “Enter” again to confirm

Release Timer Enabled Release Timer Disabled

Press “+”

ROV REMOVED ON SYSTEM RESET***THIS SETTING SHOULD NOT BE CHANGED AND SHOULD NEVER BE SET***



Press “+”

Screen Display

Instructions

DISABLE EARTH FAULT MONITORING

EARTH FAULT ENABLED

Enabled is the default

EARTH FAULT DISABLED

To change – press “Enter” when it has the option you want press “Enter” again to confirm



Press “+”

DISABLE FAULT OUTPUT

FAULT OUTPUT ENABLED

Fault output enabled is the default

FAULT OUTPUT DISABLED

To change – press “Enter” when it has the option you want press “Enter” again to confirm

***Note: Disabling the fault output does not comply with the requirements of AS7240 ***



Press “+”

INVERT LOW PRESSURE SWITCH INPUT

NORMAL INVERTED

Normal is the default

To change – press “Enter” when it has the option you want press “Enter” again to confirm



Press “+”

EXTINGUISHANT OUTPUT MONITORING LEVELS

EXTING O/P 1 = 206

Default

To scan – press “Enter” when it has the option you want press “Enter” again to confirm



Press “+”

EXTINGUISHING OUTPUT MONITORING LEVELS

EXTING O/P 2 = 206

Default

To scan – press “Enter” when it has the option you want press “Enter” again to confirm



Press “+”

CONGRATULATIONS! You have now successfully set up the Sigma XT, gently switch the “Write Enable” switch back to the right and the “Enable Keyswitch” to normal

Sydney

Block Y, Unit 1, 391 Park Road, REGENTS PARK NSW 2143
Mail: PO Box 508 GYMEA NSW 2227
Phone: 1300 INCITE (1300 462 483) | 02 9644 7144
Fax: 02 9644 7255
Email: sales@incitefire.com.au
Technical support: support@incitefire.com.au

Melbourne

Address: Unit 120, 45 Gilby Road, MT WAVERLEY VIC 3149
Phone: 03 9544 2211
Fax: 03 9544 2212
Email: salesvic@incitefire.com.au

Brisbane

Address: 25 Jeays Street, BOWEN HILLS QLD 4006
Phone: 07 3252 5366
Fax: 07 3252 4099
Email: salesqld@incitefire.com.au

Perth

Address: Unit 2, 48 Irvine Drive, MALAGA WA 6090
Phone: 08 9349 2972
Email: saleswa@incitefire.com.au